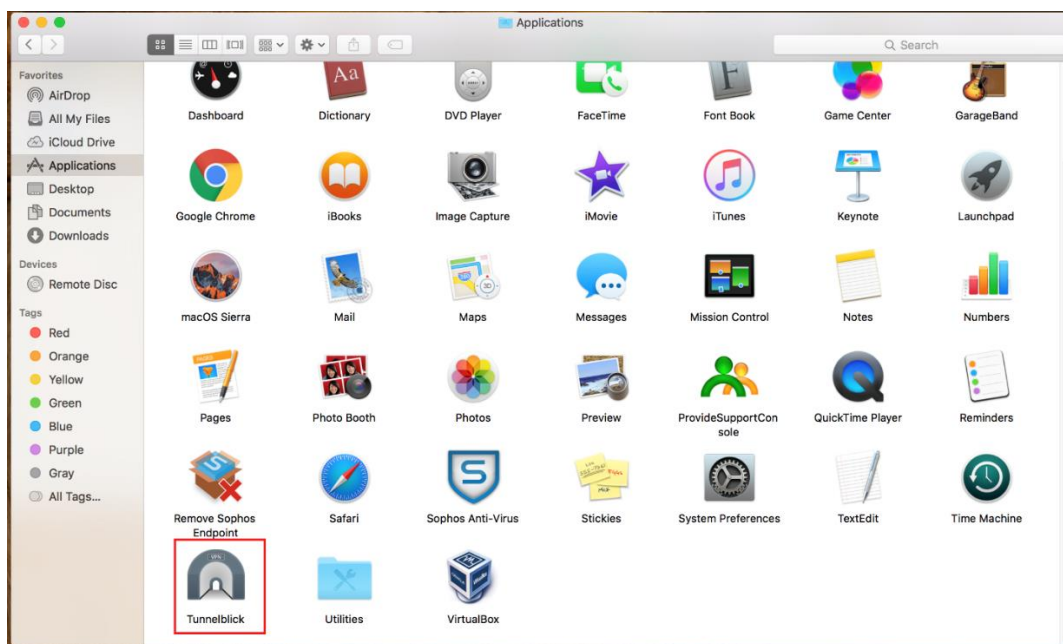


How to work from home, on a Mac

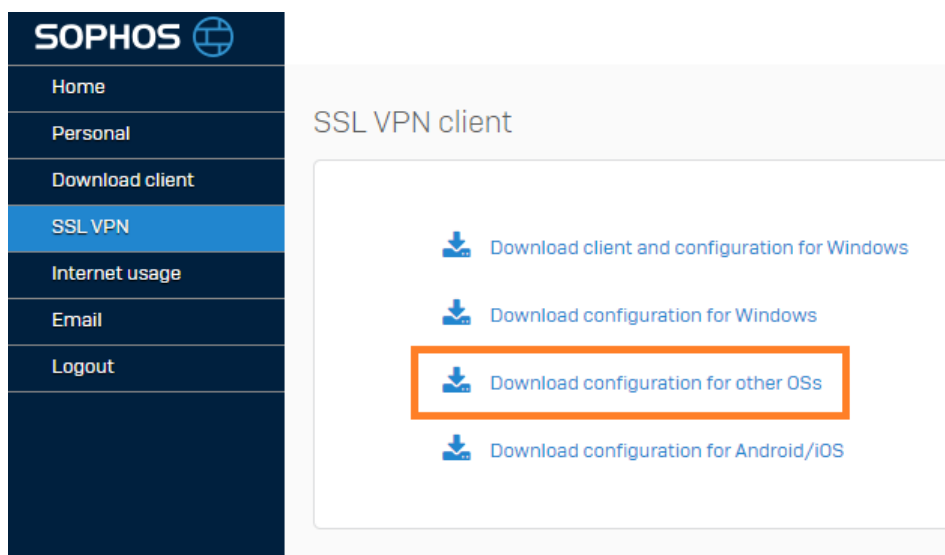
First, let's go to the Mac App Store and install the Microsoft Remote Desktop app that you'll use later to connect to your TAC PC: <https://apps.apple.com/au/app/microsoft-remote-desktop-10/id1295203466?mt=12>

Now, you need to configure the VPN connection so you can connect to the Tomago network:

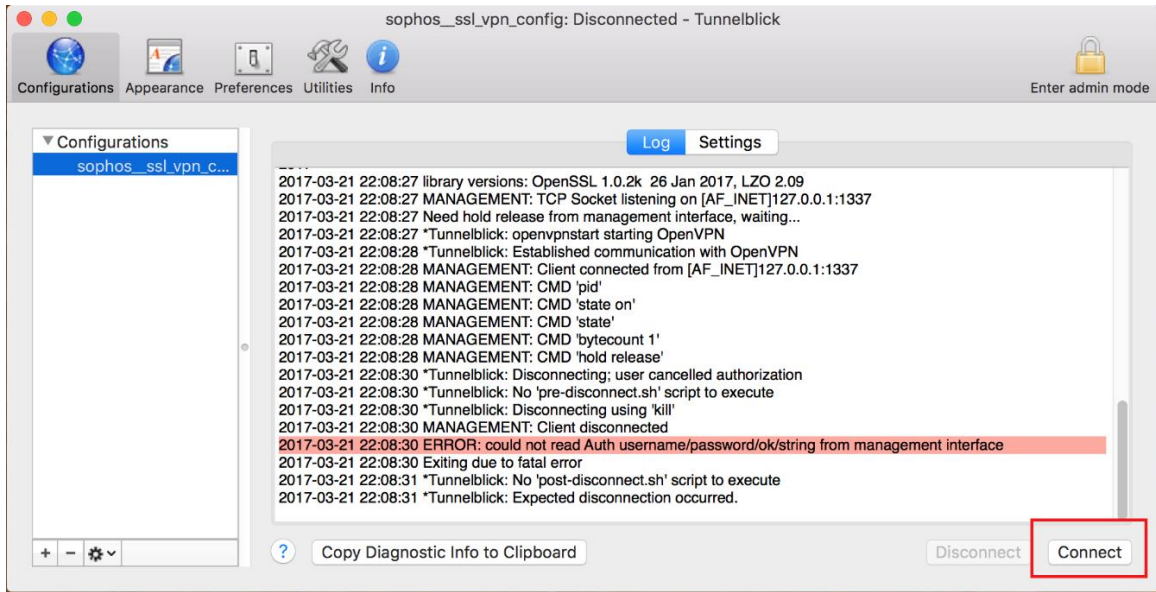
- Go to <https://tunnelblick.net/downloads.html>
- Download the latest version of Tunnelblick (the 'Stable' one)
- Once downloaded, copy it to the Applications folder



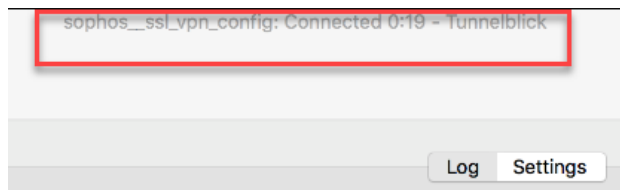
- Go to <https://portal.tomago.com.au:4443/>
- Login with you T# and password
- Go to 'SSL VPN' and click on 'Download configuration for other OSs



- Once downloaded, double-click on the configuration file and it will open in Tunnelblick
- Click on Connect



- Once connected successfully, you'll see 'Connected' at the top of the screen
-

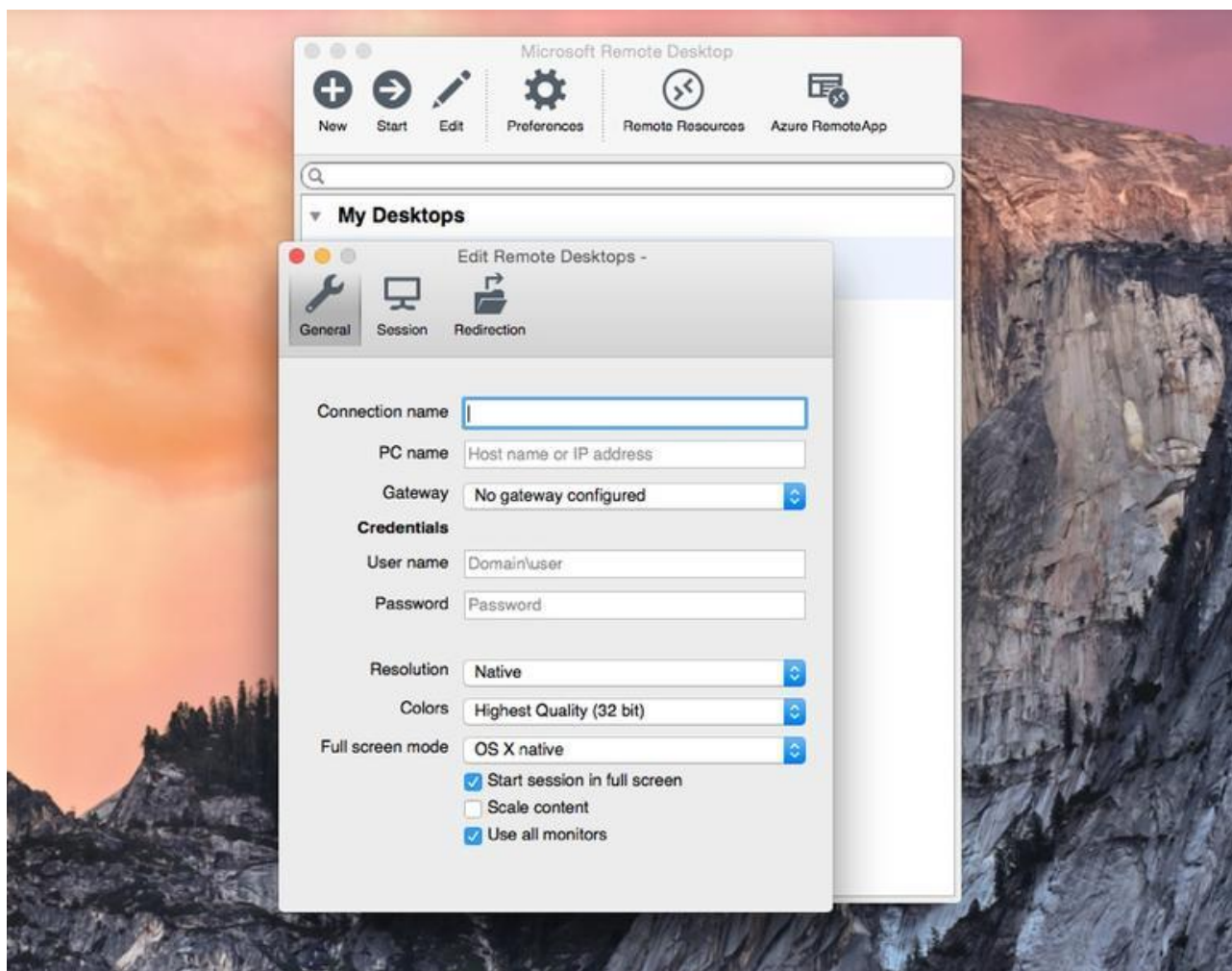


That's it, you're now connected to the TAC VPN! Now to connect to your TAC PC, open the app you installed earlier: Microsoft Remote Desktop.

If you think you'll be frequently using this remote desktop connection, now would be a good time to set it in your dock. Right click (control + click) on the icon, mouse over "Options," and click "Keep in Dock." This will keep you from having to look for the icon every time you need to use it. (You might want to do the same thing with Tunnelblick, the VPN app we installed earlier', so it's easier to find next time)



In Microsoft Remote Desktop, click on '+ New'



In 'Connection name' and 'PC name', enter your work PC name followed by **.site.tomago.com.au**, for example **TAC12345.site.tomago.com.au** . Under credentials, enter your T# and password. Once you're done, close that window and you'll see your new remote connection. Double-click on it to connect to it.

If all goes well, you should soon be connected to your work PC and it'll almost feel just like sitting at your desk at work. Almost.

If you have any issues or questions, feel free to email us on helpdesk@tomago.com.au